

## What is FAMILIAL HYPERCHOLESTEROLEMIA (FH)?

It is a common inherited disease. It affects almost 1 in 250 persons. People with FH are born with dangerously high levels of cholesterol.

### Early Cardiac Events



Untreated men with FH have a 50% chance of having a cardiac event by age of 50.

Untreated women with FH have a 30% chance of having a cardiac event by age of 60

### Higher Risk

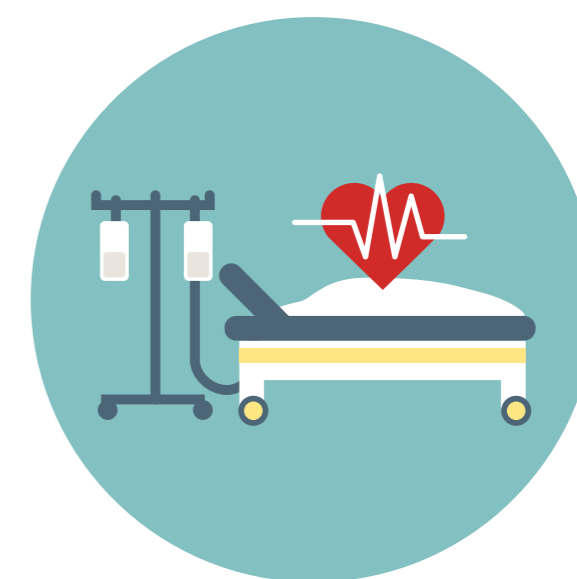


Heart Attack

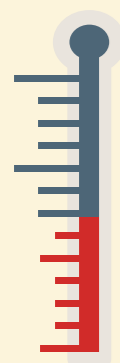


Stroke

### Early Death



### Know the signs



**Very high LDL cholesterol level at young age.**

>160 mg/dL in kids

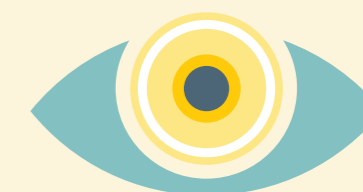
>190 mg/dL in adults



**Nodules or raised bumps on the skin, tendons, eyelids**



**Inadequate treatment with medication to lower LDL cholesterol**



**White ring around the cornea in the eye**



### How to treat

#### Medication

(statins, bile acid sequestrants, cholesterol absorption inhibitors, PCSK9 inhibitors)



**Therapy to remove LDL from bloodstream.**



**Diet & Exercise**

**Ongoing monitoring**



**If a parent has FH there is a 50% chance that a child will have it. Consider earlier screening for children whose parents have FH.**